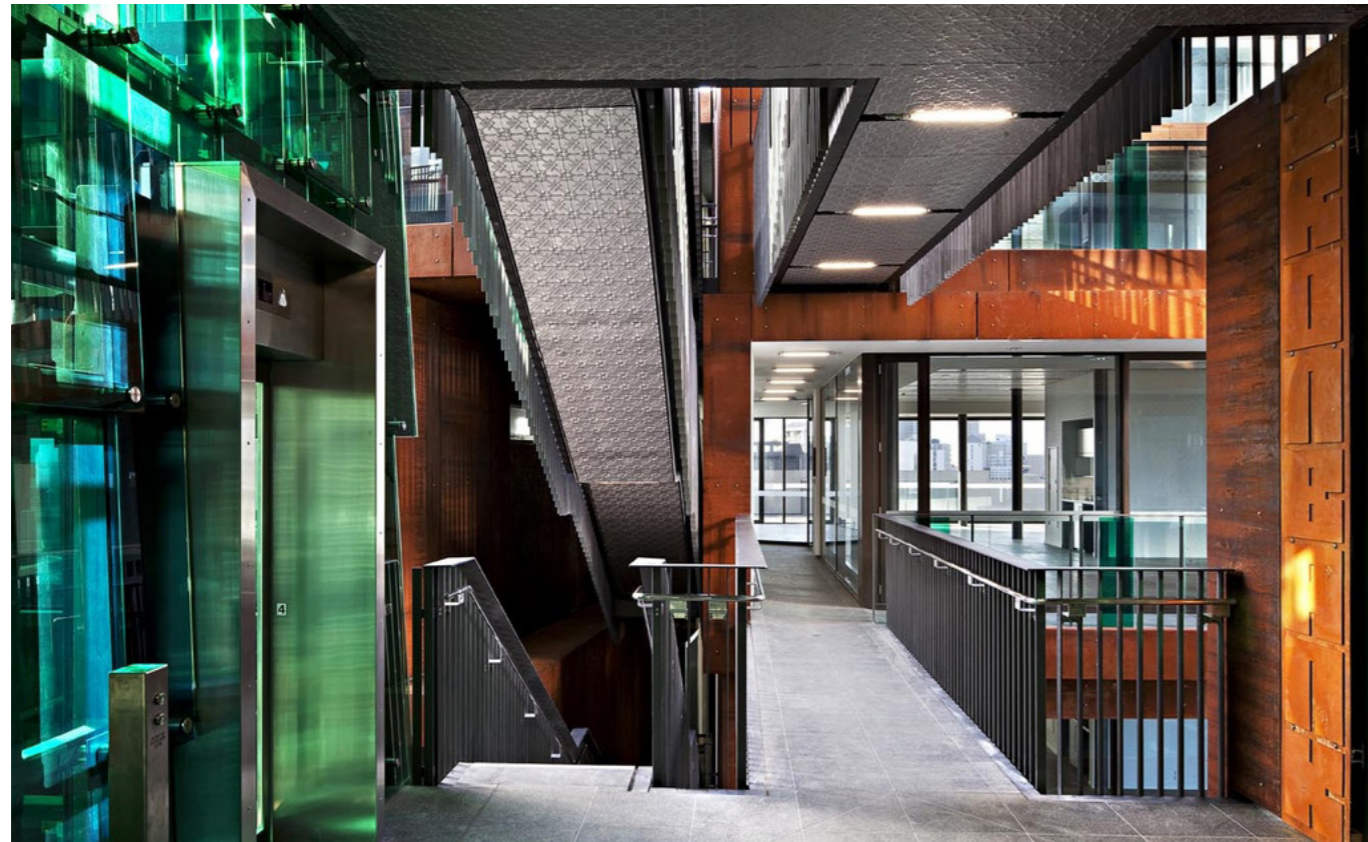


# EnduraTint™ | Tinted Glass



AUCKLAND: 09 525 3379 | WELLINGTON: 04 913 1999 | CHRISTCHURCH: 03 366 3733

**ENDURATINT IS CREATED BY ADDING METAL OXIDES TO FLOAT GLASS. TINTED GLASS HAS MANY BENEFITS INCLUDING IMPROVED SOLAR CONTROL, REDUCED GLARE FROM THE SUN, IMPROVED PRIVACY AND ORIGINALITY IN ARCHITECTURAL DESIGN**

EnduraTint can also decrease the UV rays transmitted through the glass, which can result in decreased fading of furniture.

Tinted glass absorbs more thermal energy from the sun than standard float glass, which results in increased thermal stress in the glass. For thicker and darker panes, the glass may need to be toughened in order to increase

its strength and avoid breakage due to thermal stress.

Architects and designers can feature glass like never before – combining a wide choice of tinted glass and coloured interlayers to produce transparency and translucency. More than 17,000 transparent, translucent, or solid colours that create just the right look and ambience for any project.

## APPLICATIONS

Apartments	Commercial buildings
Skylights	Anywhere tinted glass is required
Office Partitions	

## PERFORMANCE/ SPECIFYING

EnduraTint is a tinted glass product and has the options of being toughened, heat strengthened and heat soaked. EnduraTint can be used in combination with other Woods Glass products like ceramic frit (Keramo) and low-e glass (Infinet E). EnduraTint can be laminated, toughened and heat soaked to improve its properties. All glass must be engineered to specific code and design, please contact Woods Glass to find out more information.

## CLEANING/ MAINTENANCE

Normally when cleaning glass, a vinegar-based glass cleaner or mild dish soap and water with a soft, lint-free cloth or paper products is recommended. A squeegee or soft cloth may be carefully used to dry the glass and help avoid water spots.

It is not recommended to use petroleum-based cleaners or solvents as they can streak the glass and weaken the seal between the glass and frame. Avoid washing in direct sunlight to reduce streaking on the glass.

Never use razor blades, steel wool, putty knives or abrasive pads as they may damage the glass, particularly on toughened glass.

## RANGE

Many different thicknesses and tints are available for EnduraTint. EnduraTint can come in laminated or float glass. Some options are clear, bronze, blue, green, grey, red and white. Woods are able to supply many more colours so please contact us to discuss special requirements.

## BUILDING CODES

NZS 4223.1 'Glazing in buildings - Glass selection and glazing',

NZS 4223.3 'Glazing in buildings - Human impact safety requirements',

AS/NZS2208 - Building safety glazing materials

## GLASS COLOURS

Solar tinted, grey, green, bronze, crystal grey, blue, amber, red and more.

*Please ensure the current data sheet is consulted prior to specification. If in doubt please contact Woods Glass.*